

Kingston Parish Plan

2007



CONTENTS

	page
Glossary of Terms and Abbreviations	1
1 Introduction and context	2
2 Process	3
3 Kingston – a South Hams village	4
4 Kingston Timeline	5 - 6
5 Village Profile	7
6 Issues	
6.1 Housing	8 - 9
6.2 Employment	10
6.3 Shopping	11
6.4 Facilities and Amenities	12
6.5 Services	13
6.6 Transport	14
6.7 Clubs and Societies	15
6.8 Traffic and Parking	16
6.9 Speeding	17
6.10 Closer links with other parishes	18
6.11 Coping with Disability	19
6.12 Environment	20 - 21
6.13 Children / Young People's Issues	22
7 Priorities Analysis	23
8 Funding Opportunities	23
9 From the past to the future - Summary Action Plan	24 - 26

Glossary of Terms and Abbreviations

Affordable housing - social housing, which can be rented or bought in part or whole. A part mortgage means a rent is also being paid. Rent is set at rates commensurate with income/housing benefit. Purchase prices are less than the market rate. New developments are covenanted to ensure affordable prices are maintained.

AONB, Area of Outstanding Natural Beauty

CCD, the Community Council of Devon - an independent charity, which helps local communities

DCC, Devon County Council

Devon Rural Housing Partnership, (DRHP), managed by CCD, includes housing associations, DCC, SHDC and the Government Office of the South West

District Church Council, the Kingston sub committee of the Bigbury, Kingston and Ringmore Parochial Church Council

DPD, Development Plan Document

KPC, Kingston Parish Council

Rural Housing Enabler - employed by DRHP, works with local communities to improve the amount of affordable housing available in rural areas

SHDC, South Hams District Council

Short term, within 6 months

Medium term, within 18 months

Long Term, within 3 or 5 years

Ongoing, continuous action

Introduction and context

‘This is your plan for your village’.

This description launched the village consultation on the Parish Plan. The Kingston Parish Council, (KPC), through a small steering group, has lead the process, but the Plan belongs to neither the KPC nor the Parish Plan Steering Group. It belongs to the people of Kingston. The planning process took into account the previous village appraisal in 2000/1, but has been largely informed by the response to a new questionnaire, which was completed by almost 80% of occupied homes.

The Plan outlines the approach the KPC will take over the next 5 years. It is not intended to be a vision statement. Keeping a sustainable community was ranked first on the list of village priorities, (see p 23), and the overall aim of the Plan is to maintain Kingston as a sustainable village. Respondents to the questionnaire identified the components of a sustainable village as:

- a mixed community in age, income and occupation
- a range of locally obtained and/or easily accessible services
- a range of groups and activities for all ages
- a good communication system
- appropriate size – more second homes could reduce the active population
- good facilities in regular use
- good community spirit and care for individuals in time of need

The response indicated that many of these are already in place. This Plan is intended to both enhance and improve these features, without damage to the essential character of the village.

What next?

Completing the Parish Plan is just the beginning. The Plan’s success depends on, parishioners and Parish Councillors, working with other partners as appropriate, to achieve a sustainable future for the village. KPC, with the support of the village and other partners, will endeavour to implement the action plan summarised in section 9. However, over the next four to five years, unexpected events will occur, new information will become available and the action plan will need to adapt accordingly. The village will be kept informed of both progress and any changes, through the KPC notice board, the Newsletter and the village website.

Kingston is not self sufficient and needs to liaise closely with other towns and parishes, especially Ringmore, Bigbury and Modbury. The future of the village is also dependent on decisions taken by national and local government. Having a Parish Plan will put Kingston in a better position to work with the decision makers who will influence its future. Considerable help and advice has already been received from South Hams District Council, (SHDC), planning teams and the Community Council of Devon. It is intended to build on these relationships in order to achieve the action plan.

The KPC and the Parish Plan Steering Group are grateful to the Defra Rural Social and Community Programme, who provided most of the funding for developing the Plan and to the Community Council of Devon, who both managed this grant and, through the Rural Housing Enabler, carried out an independent survey of housing need, at the Parish’s request.

In May 2006, the KPC, set up a small Steering Group, the Group, to develop a parish plan.

Steering Group objectives :

- ensure that all village residents have the opportunity to contribute to the development of the Plan
- report regularly to the Parish Council
- report progress through the village Newsletter
- seek funding to support the development of the Plan
- ensure the production of a draft plan



The planning process was ‘launched’ with a stall and publicity leaflets at the Village Fair in August 2006. The Group identified a list of ‘experts’, for example; the local publican; a representative of the National Trust; an individual with disabilities, who could be consulted as appropriate. Focus group discussions were held with the Kingston Young People’s Association and a two day village open consultation event was held in October 2006. Information gathered by this process and from the former village appraisal, was used to identify the issues facing the village and inform the development of the questionnaire.

The Group has also worked with a number of professionals in appropriate fields, both to seek information and to establish links, which will now support the delivery of the action plan. These include affordable housing planning officers at SHDC, the Rural Housing Enabler at the Community Council of Devon, (CCD), the Guinness Trust and Tor Homes.

The questionnaire was developed using Village Appraisal software from the University of Gloucestershire, Countryside and Community Research Unit.

Questionnaires were distributed with the village Newsletter to every household in the village. Some second homeowners received copies by email. Most questionnaires were then collected, door to door, with repeat visits to encourage a good return.

RESPONSE FIGURES

	No. responding	Percentage responding	Total homes
All homes	136	66%	207
Occupied homes	128	79%	162
Second homes	8	18%	45

Affordable housing has been a major feature of the planning process. At the KPC’s request the Rural Housing Enabler, from the CCD, carried out an independent survey of housing need, tenure and house size for local people in Kingston to complement the information gathered in the main village questionnaire.

Villagers have also been kept informed throughout the process by a regular series of articles in the village Newsletter and through an information event held in June 2007, presenting the results of the questionnaire analysis.

Copies of the full analysis of the questionnaires, the household survey report and this plan are available from the Kingston Parish Clerk, at a small cost and are on the village website,

www.kingstonparishcouncil.co.uk

Kingston – a South Hams village



Kingston is a small, historic village situated within the South Hams AONB. The National Trust owns some coastline and a farm within the parish. There are two conservation areas within the main village. Eight residential developments, of both private and social housing, have been added between 1928 and 2000.

Currently 45 of the 207 houses in the village are second homes or holiday lets. Kingston has 391 permanent residents*. 85 people are under 20 years old and 91 are over the retirement age of 65. Unemployment is minimal and self employment is increasing.

Most people live in the village. The outlying hamlets and farms lie within a mile of the main street. Kingston is surrounded by farmland, most of it leased out or run by tenant farmers.

The nearest services lie in different directions: nearest shop at St Ann's Chapel (2 m); more shops and a health centre in Modbury (4m) and fuel (6m) at California Cross. School buses transport children to primary school in Modbury or secondary school in Ivybridge, (10m). Public transport is restricted to a weekly service to Plymouth.

The church and a well known public house, the Dolphin, are located at one end of the village adjacent to the Reading Room, which is owned by the Kingston Parish Council and is a registered charity. The village also owns allotments and a large playing field, which includes: an all-weather playing surface; a long established children's playground and a new skate board park. Kingston has the only remaining volunteer fire station in Devon.



Kingston has a strong community spirit, with many active clubs and societies to suit different needs, e.g. Mother and Toddler Group and Kingston Young People's Association, Sunday Club for young children, the Local History Society, gardening, bell ringing, art and short mat bowls clubs etc. A summer fair and a produce show are popular annual village events.

The village's long history is summarised in the Kingston Timeline.

** Source FHSA, South Devon Health Informatics Service.*

Kingston Time Line

Time Zone 1 - 846 to 1840

- 846** Aethulwulf King of the West Saxons, father of King Alfred, allocated himself most of the southern South Hams, including the tract of land which became Kingston – "King's Manor or Farm"
- 1086** In the Domesday Book, information on Kingston is included within the manor of Ermington, but the village is not named
- 1226** The Vicar of Ermington, which included the daughter church of St. James the Less, Kingston, received part of the glebe land in Kingston, formerly farmed by Robert de Womewelle
- 1276** King Henry 1 gave Kingston to Mathilda Peverel, and the Manor was assessed at one third of a knight's fee. The Lord of the Manor never lived in Kingston, nor was there ever a Manor House
- 1402** Parishioners won the right to bury their dead in Kingston rather than Ermington
- 1588** A beacon built at Beacon Point to warn against invasion by Spain
- 1647** The brig Juno, 200 tons, was discovered wrecked off the entrance to the Erme. The Captain and nine crew were driven onto Bantham Sands
- 1689** Six dissenters wrote to the Bishop of Exeter for permission, under the new Act of Toleration, to meet for worship in a Kingston house
- 1801** The population of Kingston was 354; [Lyson's Survey of Devon]
- c1803** Signal Station built at Sth Ground, Scobbiscombe, during the Napoleonic Wars

Time Zone 2 -1841 to 1899

- 1842** Tithes commuted for money payments, details shown on the Tithe Map and in the written Award. These documents supply future historians with a valuable source of information as to land holding, tenure, and use at that time
- 1850** Population of Kingston now 529; [White's 1850 Directory of Devonshire]
- c1850** John Ryder first described as a 'publican' running the Dolphin Inn
- c1860** Kingston School established
- 1873** Wesleyan Chapel consecrated. Earlier chapel noted in White's 1850 Directory
- 1881** Population of Kingston now 470; [White's 1850 Directory]
- 1884** Ordnance Survey Map shows two public houses, the Dolphin and the Britannia Inn
- 1884** A Post Office is shown on the same map
- 1890** Kingston described in White's Directory as a '*small scattered village - of 2221 acres of which 140 acres are water*'
- 1891** Great Blizzard. The snow was 6-8 ft deep. Sheep were blown into the Erme and cider apple trees destroyed. [Clive Carter, 1971 "The Blizzard of '91"]
- 1893** Completion of major restoration of Parish Church which was in serious disrepair
- 1894** Kingston Parish Council established under the new Local Government Act. Rev. W.F. Tiernay appointed as chairman

Time Zone 3-1900 to 1946

- 1901** Population of Kingston now 399; [1901 census]
- 1912** The Old Church House, formerly alms houses, established as the Reading Room, to support '*physical and mental training and recreation and social, moral and intellectual development*'. Parish Council appointed 10 '*competent persons*' as trustees
- 1914-18** World War I. 59 Kingstonians, sharing 34 family names, fought for King and Country. 7 were killed, including John Agg, who died with 800 others when the HMS Vanguard exploded at anchor in Scapa Flow
- 1926** Kingston cut off by severe snowstorm, not quite as bad as '91
- 1928** First council houses built as Park View
- 1934** Kingston was joined to the ecclesiastical parish of Ringmore
- c1935** Reading Room extended to present size.
- 1939-46** World War 2. Seven men from Kingston died. Soldiers from the 5th Buffs were stationed to defend Wonwell beach. Two on duty night and day at the phone box opposite Chapel Row
- 1940** The Reading Room was given charitable status
- 1944** First tractor, a Fordson, used at Scobbiscombe

Kingston Time Line

Time Zone 4 - 1947 to 1979

1947 Village again cut off by snow
1948 23 council houses built as Yellands Park
1949 Kingston Voluntary Firefighting Unit established as part of Devon Fire Service, with a handcart, stirrup pump and manual pumping apparatus
c1950 The on foot post delivery replaced by a Post Office van
c1950 First self propelled combine harvester used at Okenbury
1953 The Honourable Helen W. White, of Mothecombe, gifted 2.5 acres of land, now known as the playing fields, to the Parish Council for recreational use
1956 Terry Randle, the son of Frank Randle, who died in WW2, killed in Malaya
1958 First motorized fire engine based in Kingston. Station established on present site
1960 The designation of the South Devon Area of Outstanding Natural Beauty (AONB), including the whole of the parish of Kingston, was confirmed
1963 Construction of sewage treatment works for the village
c1964/5 Regular doctors' surgeries, formerly held in the Old Bakery, end
1965 Building of 8 private houses as Church Park
1966 Kingston School, one of the last all age primary schools in Devon, closes with only six children on the roll
1967/8 Quarantine regulations for foot and mouth in force
1970 Fred Williams, the last village blacksmith, closes
1972-85 2 barn conversions and 3 new houses on Home Farm
1974 Langs dairy herd goes to auction

Time Zone 5 - 1980 to 1999

1980 The church bells rehung, with two added to make a peal of six
1983/4 & 1988 First six, then 3 more, bungalows built as Arnolds Close
1985 Two separate conservation areas designated in the village
1986 Bigbury joins the ecclesiastical parishes of Kingston and Ringmore
1991 Guinness Trust builds 14 houses at Westentown
1993 Village shop closed, Tuesday Morning Market starts in the Reading Room
1994 Sub post office opened part time in the Methodist Chapel
1994/5 Major alterations and refurbishment of Reading Room to current layout
1995 Siren used for last time to summon fire crew, pagers introduced
1995 Okenbury herd of 150 milkers sold
1996 National Trust, with support from Heritage Lottery Fund, bought Scobbiscombe Farm, but did not move in until 1999. End of dairy herds at Scobbiscombe. All coastline within the farm boundaries now owned and protected by the Trust
1996 Bowling Club established an outdoor 3 rink bowling green on the playing field
1999 Tor Homes took over 19 SHDC houses in Kingston
1999 Six large houses built as Overlangs, on land formerly belonging to Langs Farm
1999 Total eclipse recorded at Kingston. The village commissioned a commemorative First Day Issue to mark the occasion

Time Zone 6 – 2000 to 2007

2000/1 First village appraisal identified several areas for future action
2001 Kingston population now 399; [2001 census] the same number as in 1901
2001 Quarantine regulations for foot and mouth close the countryside for several months
2001 Regular bus service cut, without consultation, to two, then only one, per week
2002 Kingston celebrated the Queen's Jubilee with a street party, village games and a Beacon bonfire. BBC Spotlight presented highlights of the street party
2002 Beech Torr Farm becomes organic
2004 'Ted's Tarmac', an all weather playing surface, laid down on the former bowling green, in memory of Ted Curtis, former Parochial Church Council and Reading Room Committee, chairman
2004 Closure of part time Post Office
2005 Broadband access extended to Kingston
2005/6 Skate Park opens. Complaints about noise forced its relocation across the playing field, with new, quieter equipment and acoustic barriers
2006 Methodist Chapel closes, planning permission given for conversion to holiday let
2006 Major restoration of church tower completed
2006 Morin's seat placed in the open space, Upper Townsend Park, to commemorate Morin Ness, former Parish Council chairman and good friend of Kingston
2007 Publication of Kingston Parish Plan, sponsored by Defra. 41 businesses were identified in Kingston and 45 second homes
2007 To be continued...

The timeline has been informed by both available documentation and villagers' memories. Its accuracy cannot be guaranteed.

Village Profile

Properties, local count July 2007:

207 households excluding South Langston

45 second homes

34 social housing properties (2 x 2 bed bungalows, 13 x 2 bed houses, 19 x 3 bed houses)

Parish area: 9.29 sq.kms; 3.59 sq.mls or 2294 acres.

Population estimates, FHSA, South Devon Health Informatics Service 2006:

0-9 yrs	33
10-19yrs	52
Total young people	85
20-44 yrs	85
45-64yrs	130
Total 'working age'	215
65-84yrs	84
85 plus	7
Total over state retirement age (65yrs)	91
Total village population:	391

Employment profile, village questionnaire 2007:

132 employed

65 self employed

90 retired

15 unemployed and unwaged housewife/husband

4 permanently sick/disabled

NB

All figures in the issues sections that follow are derived from the village questionnaire unless otherwise stated.

6.1

Housing

Affordable housing for local Kingston people is 2nd on the village Priority List.

Information

There are 34 units* of social housing in the parish, owned by two Housing Associations, the Guinness Trust and Tor Homes. The properties are allocated in conjunction with the South Hams District Council Housing Allocation Department. Local connections** are not prioritised in the allocation process.

* a unit is equivalent to a home or property for 1 or more individuals

** local connections means living or having lived in the village or immediate area.

An independent survey by the Community Council of Devon, on behalf of the Devon Rural Housing Partnership, has found:

2 units of alternative accommodation are needed now

6 units of accommodation may be needed in the next three years

Most of these units are needed for single people and couples

4 units are shown as being needed on the Housing Register of which only 3 are wanted in Kingston

3 households already live in rented social housing properties, 2 in Kingston

The majority want social rented accommodation

14 of those who have left are said to want to return to Kingston and

21 more units of accommodation are forecast to be required in the next 5 years

207 people want any housing development to be allocated 100% to Kingston residents, registered as in need of housing, before any others. 43 are against this view.

60 people want any new housing development to be of 5 or less units

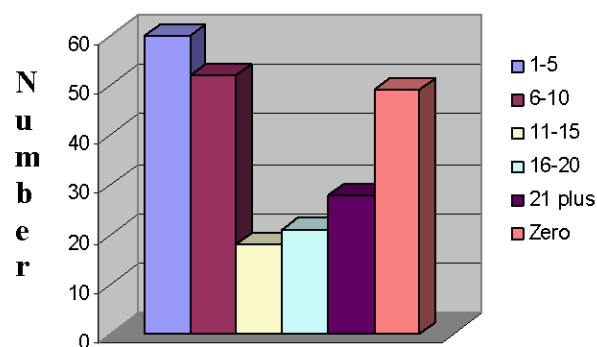
52 people want any new housing development to be of 6 to 10 units

49 people do not want any new development

99 people want any development to be within the current development boundary

60 people want any development to be outside the current development boundary

**What type(s) of housing development
would be acceptable in Kingston**



Issues

There is an urgent need for 2 units of affordable accommodation now. Additional need is more speculative and not supported by the information on the Housing Register. Current need could therefore be met from existing social housing units, as they become vacant, if local connections became a priority in the allocation process.

The independent CCD report on Housing Needs in Kingston has identified a need for 5 new affordable homes, within the next 3 years. However it recommends that urgent consideration of a specific local lettings policy could address this need, within the appropriate timeframe. They also point out the existing high turnover rate in houses belonging to the Guinness Trust and the consequent social instability in the community. A lettings policy is recommended, which focuses on applicants who have established local connections and a commitment to Kingston. If this recommendation is implemented there is, in the short term, no strong case for building new affordable homes in Kingston. However the main questionnaire identifies a longer term need and this must be kept under active review.

Kingston's future housing needs will be subject to the criteria set out in the new Local Development Framework*. The Affordable Housing Development Plan Document, (DPD), notes that 400 affordable homes will be allocated to 52 villages in the South Hams, including Kingston. The Rural Areas DPD, will include the methodology for distributing this allocation among the villages. It will also confirm whether village development boundaries should be opened up or left tightly drawn, as now. In responding to this DPD, the KPC has supported the option, which allocates homes against village based need. Whatever the outcome there is no guarantee that Kingston will benefit. However if in the future, a proven need exists and strong village support, willing landowners, funding and developers can be identified, a case could be made for 'exception status'. This would allow a development of 100% affordable housing to be built outside the development boundary.

Only 49 people have stated that they do not want any development in the village. If there should be any development, a large majority want it to be, exclusively, affordable housing for local people, of less than 10 houses, and within the development boundary. Any housing under exception status would be outside the development boundary and the village must be consulted again should this possibility arise.

* The Local Development Framework can be found at www.southhams.gov.uk; or tel. 01803 861234

Actions

Short term: the Kingston Parish Council will liaise with both the Guinness Trust and Tor Homes to work towards prioritising local people in allocating existing social housing.

Long term: the Kingston Parish Council will set up a housing group including both parish councillors and other appropriate residents. Its brief will be to:

- keep affordable housing need under regular review
- encourage those with housing needs to go on the Housing Register
- ensure ongoing familiarity with the implementation of the Local Development Framework and the options available to Kingston
- if needed, identify agencies able to consider small new developments
- maintain a good relationship with both existing Housing Associations, SHDC and other influential parties, to support existing and future tenants

Policy Statement

The Kingston Parish Council is committed to supporting any proven need for affordable housing for local people, who would otherwise be unable to live in the village.

Partners

Parish, Kingston Parish Council, South Hams District Council, the Community Council of Devon, Housing Associations, and others.

6.2

Employment

Creating more jobs in Kingston was 11th on the village Priority List.

Information

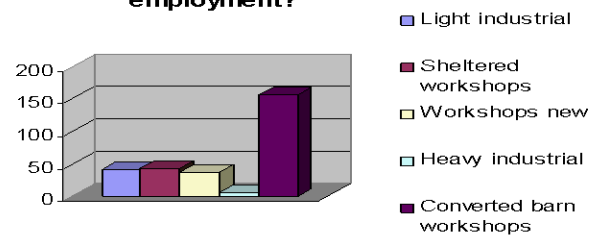
Of those who responded to the questionnaire;
The majority are employed
Less than a third are retired
65 are self employed

49 respondents say their main place of work is in Kingston or adjoining parishes
41 businesses are located in Kingston
13 of these businesses employ others

The following support was given to various types of development to support employment in Kingston



Which types of development would you support in Kingston for employment?



Issues

There appears to be a trend towards increasing self employment between 2000* and 2007. The internet may be enabling more people to work from home with, as a consequence, more choice over where to live. Broadband reception is considered good to reasonable in the village, though mobile phone reception is poor.

Respondents to the questionnaire noted that evidence of many people employed locally is a feature of a sustainable village community. Keeping a sustainable community was noted as the village's first priority, but creating more jobs came lower down the list. There is some support for small scale workshop development, but far more for use of existing and possibly redundant buildings.

The local public house provides some employment and is seen by many as an important village amenity. The publican notes the importance of both holidaymakers coming into the village and residents of second homes and holiday lets, to the business. Tourism also contributes to local employment in a variety of home maintenance services

*Kingston Village Appraisal 2000/1.

Actions

Ongoing: Kingston Parish Council will support small scale activities, which promote locally based employment, where such activity is appropriate to the size and character of the parish.

Medium term: Kingston Parish Council will encourage a debate on the value of tourism to the village.

Long term: Kingston Parish Council will develop better information provision on facilities and amenities for visitors.

Policy Statement

Kingston Parish Council will develop a proactive approach to maintaining Kingston as a working community, whilst retaining the character of the village.

Partners

Parish, local businesses, Kingston Parish Council, South Hams District Council

6.3

Shopping

A village shop was 4th on the village Priority List.

Information

Transport difficulties getting to the shops.

	often	occasionally	never
St. Ann's Chapel	4	19	214
Modbury	7	23	208
Supermarkets	5	20	208
Other	5	12	136



Issues

Most people do their main weekly shop at local supermarkets and have effective arrangements for getting there. The nearest shop at St Ann's Chapel is open 'all hours' for groceries. Modbury shops are reasonably well used, especially for fresh meat and DIY items. While the use of internet shopping for food is still limited it appears to be on the increase. Plans for a new supermarket, at Kingsbridge, may widen choice for internet shoppers. Milk is delivered to the door three times weekly and a number of other food items can be ordered from the same service. A number of respondents use the weekly mobile fish shop.

Nevertheless a village shop is high on the list of priorities given by respondents to the questionnaire. The potential weekly spend does not appear to justify setting up a shop on a commercial basis, with any potential profit taken up in overheads and staff time. However a community shop, staffed by volunteers might be a possibility.

Requests for a mobile fish and chip shop were made at the village consultation in October 2006. Enquiries were made and the Flying Fryer Fish and Chip van now visits the village on alternate Thursday evenings.

Actions

Short term: A local fish and chip mobile service was contacted and arrangements have already been made for this to visit the village fortnightly.

Long term: Kingston Parish Council will support any viable initiative, put forward for a village shop

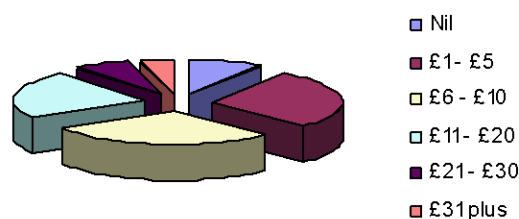
Policy Statement

Kingston Parish Council will continue to support the concept of a village shop

Partners

Parish, Kingston Parish Council, retail outlets as appropriate.

How much would you spend weekly in a community shop



6.4

Facilities and Amenities

**Keeping the existing Reading Room 5th on village Priority List
Building a new village hall came 8th on the village Priority List.**

Information

How often do you use the following facilities

	weekly	monthly	occasionally	never
Church	34	28	125	72
Reading Room	62	28	146	27
Pub	75	37	118	26
Playing fields	33	10	96	116
Designated footpaths	64	52	108	30
Wonwell beach	78	69	93	9
Village WEB site	4	4	40	195



Issues

18 respondents suggested that a new village hall was needed. However the majority of respondents think the Reading Room is adequate for village needs. Keeping the existing Reading Room comes higher on the village priority list than building a new one. Although the low ceiling is a limiting factor for some sports, e.g. badminton, there has been considerable investment into improving the facilities, which can support a wide variety of use. The Reading Room Management Committee is committed to encouraging greater usage, particularly by village based organisations.

St James the Less is important to the community both for key life events such as weddings, funerals and baptisms, but also as a historical building and as a focal point to the community. There was also a positive response to the potential use of the church for other purposes. The District Church Council would like to encourage the use of the church premises for a wider range of activities, not necessarily those, which might traditionally take place in a church

Actions

Short term and on going: Kingston Parish Council will encourage actions by the Reading Room Management Committee, which increase village usage of the Reading Room.

Short term: Kingston Parish Council and the District Church Council will together identify a joint member, who will act as a link between the two bodies.

Long term: Kingston Parish Council will monitor future need for a new village hall to meet viable demands for activities needing more space.



Policy Statements.

The Kingston Parish Council will continue to provide funding and proactive support and encouragement to the Reading Room Management Committee to maintain and further enhance the use of this facility, for the benefit of the whole village.

Kingston Parish Council will work with St James the Less District Church Council, to support use of the church for activities, which cannot be held in the Reading Room

Partners

Kingston Parish Council, District Church Council, parish, local businesses

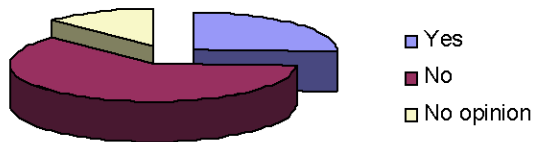
6.5

Services

Services were not on the village Priority List.

Information

Do you think Kingston needs a public toilet?



Issues

Most people feel the standard of emergency services is reasonable and the Fire Service, good. There is a less positive response to the non emergency police service. A lot of people state that they have not used these services. The Kingston Parish Council has agreed an Emergency Plan for the village, in consultation with the appropriate services.

There is reasonable satisfaction with other services excepting mobile phone and to a lesser extent TV reception. 260 out of a potential 296 respondents answered the question on support for a mobile phone mast(s). 128 are for and 132 against a mast(s). It is likely that this will be a contentious issue. There is insufficient support for a public toilet, bearing in mind there are facilities for customers at the Dolphin and in the Reading Room when in use

Actions

Medium term: Kingston Parish Council will initiate an investigation and raise awareness of the issues about mobile phone reception/masts.

On going: Kingston Parish Council will keep the standard of emergency services to the village and the Emergency Plan under review.

Policy Statement

Kingston Parish Council will investigate the issues about mobile phone reception and not take action until further consultation has taken place.

Partners

Parish, Kingston Parish Council, the emergency services, other parties as appropriate

6.6

Transport

A community minibus is 10th on the village Priority List.

Transport sharing is 16th on the village Priority List.

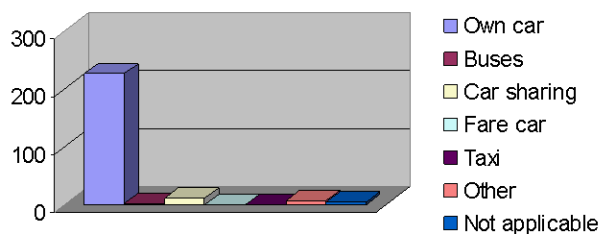
Information

226 out of 252 respondents use their own car as their major means of transport.

Respondents mainly car share for shopping, 41, and for social and leisure purposes, 106. 55 respondents car share on a weekly basis, 10 car share every day.

162 out of 251 respondents would support a community owned minibus, although this is not given a very high priority.

Which of the following is your major means of transport



Issues.

There is only one weekly bus service to and from Plymouth. Few people use bus services from Modbury, taxis or Fare Car. Most people depend on their own car and car sharing is common. Any government policy designed to restrict the use of cars could be of major concern to a rural community such as Kingston.

Actions

Medium term: Kingston Parish Council will investigate the pros and cons of buying and funding a minibus for community use.

Long term: Kingston Parish Council will keep the village informed on the viability of a community minibus for Kingston

Policy Statement

Kingston Parish Council notes residents' dependence on the motor car and will respond to any government consultation documents which might affect car usage in rural areas

Partners

Parish, Kingston Parish Council, other parties

6.7

Clubs and Societies

Providing more sports and leisure facilities is 9th and more youth facilities 14th on the village Priority List.



Issues

Kingston has a wide range of clubs and societies. However the majority of respondents do not take part in these activities. Existing activities might be inadequately promoted, timed or others are needed. Lack of involvement may simply be a matter of choice or pressure of other commitments.

Over 45 respondents have expressed considerable interest in each of the following new clubs/activities: badminton; keep fit; tennis; rambling club; wildlife group.



Actions

Short term: Kingston Parish Council will maintain an up to date list of sports and leisure groups with key contact details to be held on the village website, notice boards and from time to time printed in the Newsletter.

Policy statement

Kingston Parish Council will support and facilitate where possible, the setting up of new activities in the parish and the continuation of existing ones.

Partners

Parish, Kingston Parish Council, South Hams District Council.

6.8

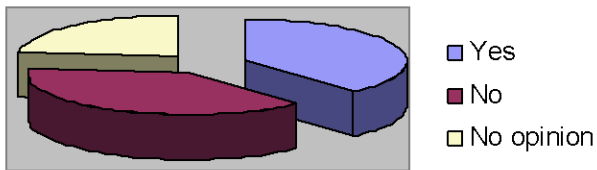
Traffic and Parking

More parking for residents is 12th and for visitors 13th on the village Priority List

Information

The majority of Kingston residents own their own car. 196 of those responsible for a vehicle, park in garages or off the road. Only 23 respondents say they park in the road.

Does Kingston need a car park?



Issues

While more car parking for residents or visitors is put low on the priority list, many people have noted the need for a car park. It seems likely that residents are concerned about other people's thoughtless parking rather than their own needs. Coast path walkers do leave cars parked in the village, for example in Church Park, causing problems for residents during peak holiday periods. The National Trust is willing to work with the KPC in considering car parking options.

Actions

Short term: Kingston Parish Council is investigating the possibility of providing car parking in co-operation with the National Trust.

Ongoing: Kingston Parish Council requests to park with greater care will continue to be placed in the Newsletter and on windscreens as appropriate.

Policy Statement

Kingston Parish Council will keep the issue of car parking under review, liaising as appropriate with the National Trust.

Partners

Parish, Kingston Parish Council, National Trust.

6.9

Speeding

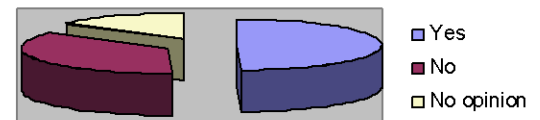
Speed reduction is 6th on the village Priority List.

Information

Speed control measures would be supported as follows:

- 127 - passive measures e.g., go slow signs
- 41 - active measures e.g., speed humps
- 101 - introduce a speed limit
- 66 - do not support speed control measures

Do you think speeding traffic is a problem in Kingston?



Issues

Many people are seriously concerned about speeding in the village and it comes relatively high on the village priority list. The issue was also raised in the consultation with young people. Local Authorities can set legal and enforceable speed limits on unlit roads, under Section 84 of the Road Traffic Act, 1984. 30 mph, rather than 20mph, is now the preferred speed limit for villages in Devon. Slow down signs may not be legal if there is no limit in place.

Actions

Short term: Kingston Parish Council will carry out a thorough investigation of ways and means of slowing traffic through the village

Policy Statement

Kingston Parish Council will take all possible steps to make the village a safer place, for pedestrians and drivers.

Partners

Parish, Kingston Parish Council, Devon County Council, other parties

6.10

Closer links with other parishes

This issue is not on the village Priority List

Information

When asked if Kingston had to form closer links with another parish would they prefer Ringmore and Bigbury or Modbury, 190 people responded, discounting the ‘don’t knows’ and ‘no opinions’.

91 preferred Ringmore / Bigbury. The reasons cited were:

- similar village based and rural/coastal interests and issues
- existing links through sharing a vicar and linked groups and societies.

76 preferred Modbury. The reasons cited were:

- larger range of facilities
- on a main bus route
- presence of shops and health centre
- friends lived there
- school location
- interesting place

Issues

Some respondents noted the need to work with both Ringmore /Bigbury and Modbury for different reasons. For example close ties are necessary with Modbury for reasons of sustainability. This relationship must work both ways as Modbury’s sustainability is enhanced by Kingston residents use of its’ shops, health centre and schools. On the other hand there may be issues to be addressed in the future, which are about maintaining sustainable villages. Working together could give the villages a stronger voice, especially if all villages have Parish Plans in place.

Actions

Long term: Kingston Parish Council will seek to identify ways in which the village could work with other parishes to mutual advantage.

Policy Statement

Kingston Parish Council will seek to develop better links with Ringmore, Bigbury and with Modbury Parish Councils.

Partners

Kingston Parish Council, Ringmore, Bigbury and Modbury Parish Councils, National Association of Parish Councils

6.11

Coping with Disability

Improving disabled access and facilities is 15th on the village Priority List.

Information

42 out of 265 respondents said they had a health problem/disability, which affects their everyday living.

Access to facilities for people with disabilities in Kingston

	Good/ Reasonable	Poor	No opinion	Do not use
Church	41	118	26	40
Reading Room	191	1	18	15
Pub	169	17	19	16
Playing fields	138	14	24	41

Issues

The relatively large number of people who say they have a health problem/disability, at a level which affects everyday living, indicates a stronger need to provide better supporting facilities than is perhaps recognised by mainly able bodied respondents. Physical disabilities might include mobility and/or sensory problems and those with disabilities do not always ask for the support they should expect to find in a caring community. Much has been done to improve access to facilities in Kingston. St James the Less District Church Council is working to establish disabled access to the church. However there are difficult and probably expensive problems to overcome. At the time of going to press investigative work had started, but as yet no firm date can be given for achieving better access.

The Dolphin Inn is a listed building, constraining alterations. The doors are wide enough for wheelchair access, but there are small steps. The publican and staff welcome visitors with disabilities to the bar and eating areas and are happy to give all assistance possible.

Actions

On going: Kingston Parish Council will continue to ensure that it is compliant with the Disability Discrimination Act of 1995.

Policy Statement

Kingston Parish Council is committed to providing and maintaining facilities and amenities for those with disabilities on sites for which it has responsibility

Kingston Parish Council will encourage the provision of better facilities on other sites for which it does not have responsibility.

Partners

Parish, Kingston Parish Council, St James the Less District Church Council, the Dolphin, other appropriate agencies

6.12

Environment

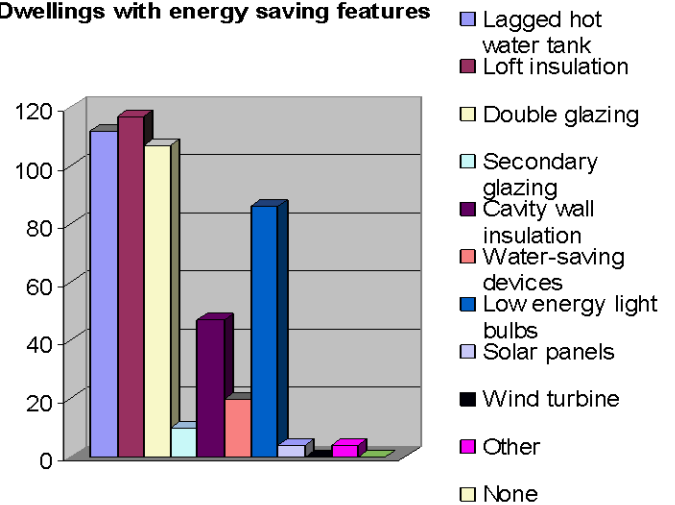
Protection of the countryside and its wildlife is 3rd and improving the environment is 7th, on the village Priority List.

Information

Saving energy



Dwellings with energy saving features



210 out of 256 people want Kingston Parish Council to make a formal commitment to a sustainable (renewable energy/energy saving) environment. 46 do not.

Recycling

236 out of 237 respondents want a
bottle bank
156 want a newspaper bank
144 want a clothing bank
136 want a can bank
77 want a village compost heap



245 respondents out of 266 say the quality of the countryside is very important to them. 20 say it is important and the remaining 1 has no opinion.

What people think can be done to improve the environment of Kingston

	very important	worth doing	not necessary
Plant more trees	67	99	46
Cut down some trees	8	23	137
Look after woodlands	125	91	3
Preserve single trees in special places	110	80	11
Preserve old orchards	104	81	12
Plant new orchards	57	94	42
Keep hedges short and tidy	76	96	34
Let hedges grow naturally	27	61	83
Plant more hedges	25	37	102
Clean up the beach	142	82	5
Preserve Devon banks	147	68	2

What people think can be done to protect wildlife in Kingston

	very important	worth doing	not necessary	don't know
Reducing pollution in the countryside	134	64	21	2
Campaign against litter & rubbish	162	57	9	3
Look after wetlands etc.	132	88	5	3
Work more closely with local farmers	98	97	18	10
Work more closely with National Trust, RSPB, Devon Wild Life Trust	92	91	28	10

Issues

The response to the questionnaire indicates that the environment of Kingston is the village's greatest asset. It is the reason many people live here and why others visit when they can. The environment is under threat at several levels and both individuals and communities are being encouraged to take action to protect it.

Respondents are not yet making the best use of the available energy saving devices in their homes. The SHDC recycling procedures are, overall, working well and the majority of residents use them effectively. Newspapers and cans may be disposed of this way though many feel extra facilities are needed. The provision of village bottle and clothing banks is an immediate priority and the former might be accomplished in partnership with the Dolphin. A village compost heap was raised as a possibility at the first consultation event. Its management would need careful consideration.

The response to questions on the improvement and protection of the environment indicates a pool of goodwill and intent, which could be used to underpin a more effective approach to maintaining our environment and minimising our combined carbon footprint. The National Trust has indicated that it is willing to work with the parish on conservation projects.

Actions

Short term: Kingston Parish Council will negotiate the provision of bottle and clothing banks for village use.

Kingston Parish Council will make a formal commitment to promoting a sustainable (renewable energy/energy saving), environment through all its activities.

Ongoing: Kingston Parish Council will raise awareness and provide information via the Newsletter and through workshops to encourage energy saving

Long term: Kingston Parish Council will nominate a Parish Councillor to set up and lead/facilitate a small task group to develop a proactive approach to encouraging more use of energy saving devices. The task group would also seek to identify and encourage projects and activities, which protect and maintain the environment, with reference to the activities supported by respondents as above.

Policy statements

Kingston Parish Council is committed to promoting a sustainable (renewable energy/energy saving) environment in all its activities

Kingston Parish Council will actively facilitate village activities, which seek to raise awareness of, protect and maintain the environment and wildlife.

Partners

Parish, Kingston Parish Council, the Dolphin Inn, local businesses, the National Trust, local landowners, South Hams District Council, Environment South Hams, (a working group of the South Hams Strategic Partnership) and others.

6.13

Children and Young People's Issues

Process

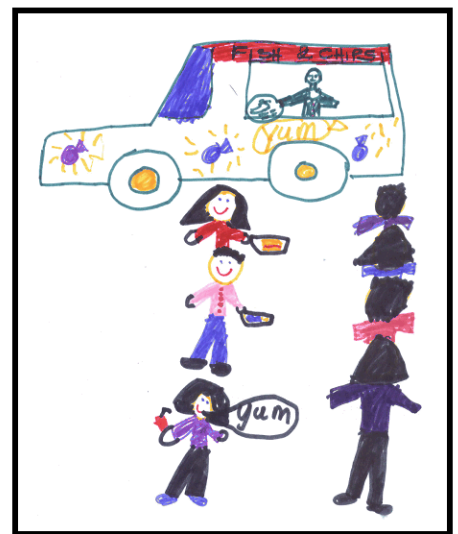
Members of Kingston Young Peoples Association were invited to attend discussion forums and 15 young people contributed to lively discussion and debate. Family groups and the Sunday Club also held discussions. These events both raised young people's awareness of the Plan and its purpose and gave them an opportunity to contribute.

Children's activities tables were available at both village consultation and information events.

134 out of 146 who responded said the facilities provided in the children's playground are good to reasonable

Response

Young people in Kingston say they like living in a peaceful village and using the beaches and footpaths. The mobile library and Sunday Club were singled out for praise. They provided the following wish list, all of which might be addressed in various ways: shop; café; swimming pool; indoor play area; tennis courts; path to the skate park; local playgroup; visiting toy bus and fish and chip van. The latter request has already been met. The Kingston Parents and Toddlers Group now meets as South Hams Shrimps, with a wider membership from St Ann's Chapel and other villages, in the Bigbury Memorial Hall. Concern was expressed about the dangers of speeding cars in the village and this has been referred to under section 6.9.



Actions

On going: Kingston Parish Council will maintain an awareness of the needs of young people in Kingston and encourage their presence at Parish Council meetings when appropriate.

Policy Statement

Kingston Parish Council will liaise with the relevant children and young people's clubs and societies to assist where possible in viable future projects.

Partners: Kingston Young Peoples Association, Kingston Parish Council, young people and parents.

Priorities Analysis

Priority Placing	Priority Item	Points
1	Keeping a sustainable community	562
2	Affordable housing for local Kingston people	483
3	Protection of the countryside & its wildlife	428
4	A village shop	343
5	Keeping existing Reading Room	295
6	Speed reduction	240
7	Improving the environment	198
8	Building a new village hall	142
9	Providing more sports & leisure facilities	114
10	A community mini-bus	112
11	Creating more jobs in Kingston	110
12	More parking for residents	101
13	More parking for visitors	94
14	More youth facilities	93
15	Improving disabled access and facilities	38
16	Transport sharing	27
		Total 3380

Funding Opportunities

Information

As part of the development of the Parish Plan, it has become apparent that opportunities to obtain funding are available from a range of sources. Some funding is only available to villages with a Parish Plan in place.

Issues

Some of these funding opportunities could be relevant to the needs of the Action Plan. In the past the parish as a whole has been reasonably successful in getting funding. However the bidding process can be time consuming and require a certain amount of expertise. It would be helpful to establish a central pool of knowledge and information, on which any parish group can draw for help and guidance. It might also be helpful to maintain a central register of parish groups and their interests in order to advise them of available funding opportunities should these arise.

Actions

Short term and ongoing. A parish councillor/officer and/or a parish volunteer will be appointed to investigate relevant sources and types of funding and how to apply.

Policy Statement

Kingston Parish Council will do all possible within their remit, to assist in obtaining available funding for relevant Action Plan items and any other worthwhile projects and causes identified by the parish.

Partners

Parish, Kingston Parish Council, local clubs and societies etc, funding organisations

From The Past



KINGSTON VILLAGE APPRAISAL

Held - MAY/JUNE 2000

Report - FEBRUARY 2001

KINGSTON PARISH PLAN QUESTIONNAIRE

March 2007



ingsbridge
h Hams
n

To



2007 +

Kingston
Action
Plan

The Future

9 Action Plan - Summary

Sheet 1

Time Scale	Action	Finances ?	Completed
Short Term			
Section 6.1	The KPC will liaise with both the Guinness Trust and Tor Homes to work towards prioritising local people in allocating existing social housing	No	
Section 6.3	A local fish and chip mobile service was contacted and arrangements have already been made for this to visit the village fortnightly	No	Yes Jul-07
Section 6.4	KPC will encourage actions by the Reading Room Management Committee, which increase village usage of the Reading Room	Possibly	
Section 6.4	KPC and the District Church Council will together identify a joint member, who will act as a link between the two bodies	No	
Section 6.7	KPC will maintain an up to date list of sports and leisure groups with key contact details to be held on the village website, notice boards and from time to time printed in the Newsletter	No	
Section 6.8	KPC is investigating the possibility of providing car parking in co-operation with the National Trust	Possibly	
Section 6.9	KPC will carry out a thorough investigation of ways and means of slowing traffic through the village	No	
Section 6.12	KPC will negotiate the provision of bottle and clothing banks for village use	Possibly	
Section 6.12	KPC will make a formal commitment to promoting a sustainable (renewable energy/energy saving), environment through all its activities	Possibly	
Section 8	A parish councillor/officer and/or a parish volunteer, will be appointed to investigate relevant sources and types of funding and how to apply	No	
Medium Term			
Section 6.2	KPC will encourage a debate on the value of tourism to the village	No	
Section 6.5	KPC will initiate an investigation and raise awareness of the issues about mobile phone reception/masts	No	
Section 6.6	KPC will investigate the pros and cons of buying and funding a minibus for community use	No	
Ongoing			
Section 6.2	KPC will support small scale activities, which promote locally based employment, where such activity is appropriate to the size and character of the parish	No	
Section 6.5	KPC will keep the standard of emergency services to the village and the Emergency Plan under review	No	

9 Action Plan - Summary

Sheet 2

Time Scale	Action	Finances ?	Completed
Ongoing			
Section 6.8	Continued KPC requests to park with greater care will continue to be placed in the Newsletter and on windscreens as appropriate	No	
Section 6.11	KPC will continue to ensure that it is compliant with the Disability Discrimination Act of 1995	Possibly	
Section 6.12	KPC will raise awareness and provide information via the Newsletter and through workshops to encourage energy saving	No	
Section 6.13	KPC will maintain an awareness of the needs of young people in Kingston and encourage their presence at Parish Council meetings when appropriate	No	
Section 8	A parish councillor/officer and/or a parish volunteer will be appointed to investigate relevant sources and types of funding and how to apply	No	
Long Term			
Section 6.1	KPC will set up a housing group including both parish councillors and other appropriate residents. Its brief will be: * keep affordable housing need under regular review * encourage those with housing needs to go on the housing register * ensure ongoing familiarity with the implementation of the Local Development Framework and the options available to Kingston * if needed, identify agencies able to consider small new developments * maintain a good relationship with both existing Housing Associations, SHDC and other influential parties, to support existing and future tenants	No	
Section 6.2	KPC will develop better information provision on facilities and amenities for visitors	No	
Section 6.3	KPC will support any viable initiative put forward for a village shop	No	
Section 6.4	KPC will monitor future need for a new village hall to meet viable demands for activities needing more space	No	
Section 6.6	KPC will keep the village informed on the viability of a community minibus for Kingston	No	
Section 6.10	KPC will seek to identify ways in which the village could work with other parishes to mutual advantage	No	
Section 6.12	KPC will nominate a Parish Councillor to set up and lead/facilitate a small task group to develop a proactive approach to encouraging more use of energy saving devices. The task group would also seek to identify and encourage projects and activities, which protect and maintain the environment, with reference to the activities supported by respondents as above	No	

